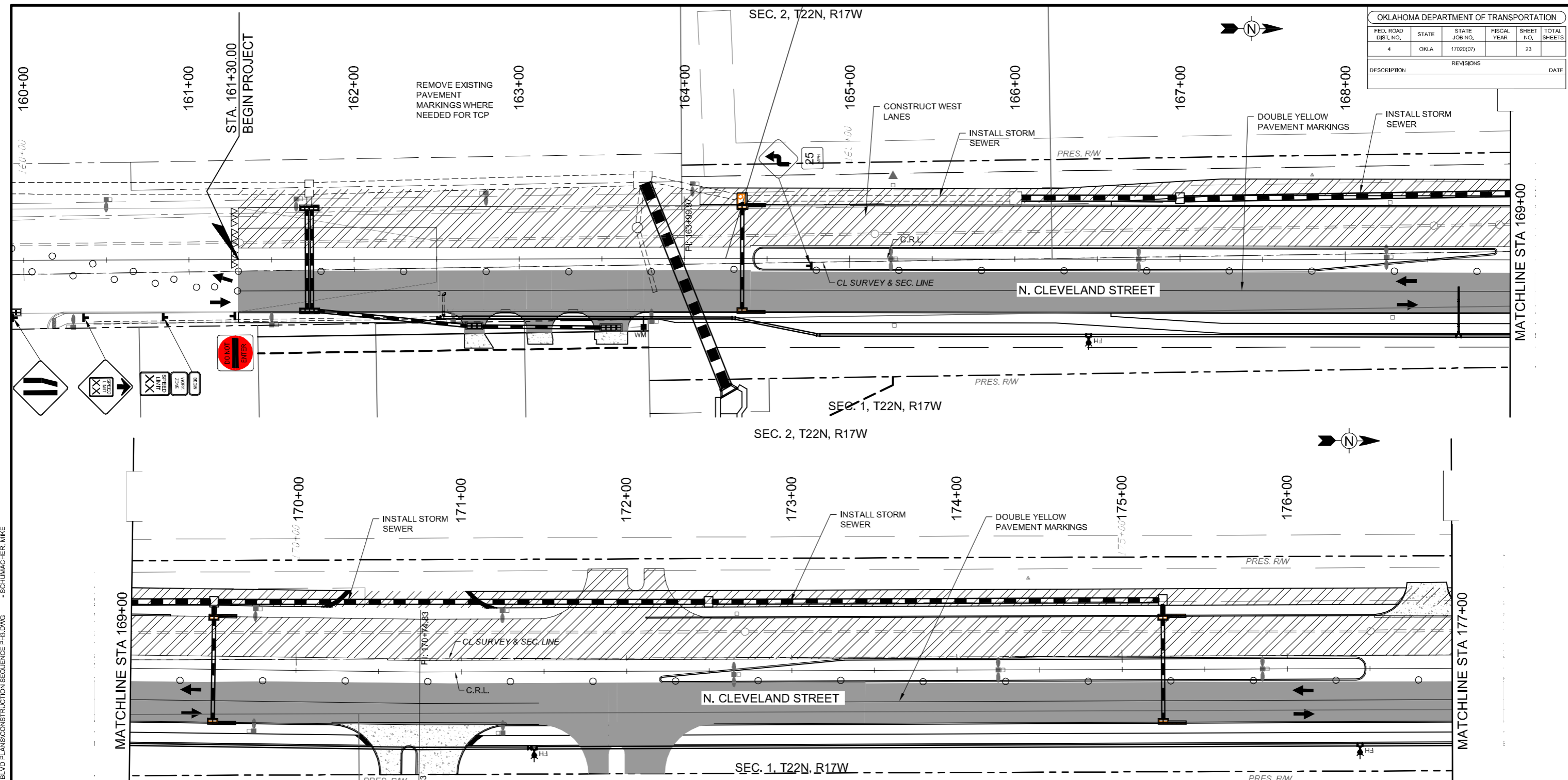


OKLAHOMA DEPARTMENT OF TRANSPORTATION					
FED. ROAD DIST. NO.	STATE	STATE JOB NO.	FISCAL YEAR	SHEET NO.	TOTAL SHEETS
4	OKLA	17020(07)		23	
DESCRIPTION			REVISIONS	DATE	



MATCHLINE STA 169+00

MATCHLINE STA 177+00

- NOTES:**
- WHERE WORK OCCURS IN CLOSE PROXIMITY TO TRAFFIC, UTILIZE THE 2009 MUTCD FIG. 6H-10 FOR "LANE CLOSURE ON A TWO-LANE ROAD USING FLAGGERS (TA-10)" DURING OFF-PEAK DAYLIGHT HOURS AS NEEDED.
 - REFERENCE ODOT TRAFFIC CONTROL STANDARDS TCS1-1, TCS2-1, TCS3-1, TCS4-1, TCS5-1, TCS6-1 & ROADWAY STANDARD PDT-1.
 - SEE ODOT TRAFFIC CONTROL STANDARD TCS21-1 FOR CONSTRUCTION ZONE PAVEMENT MARKING.

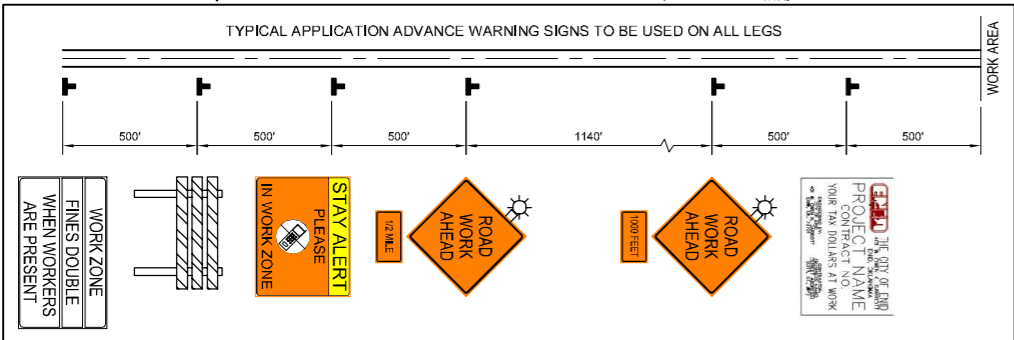
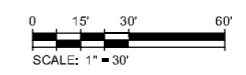
SUGGESTED SEQUENCE OF CONSTRUCTION

- PHASE 3:**
- REMOVE EXISTING ROADWAY
 - CONSTRUCT WEST PORTION OF STORM SEWER AND TRUNK LINE
 - CONSTRUCT WEST LANES
 - CONSTRUCT WEST SIDEWALK/TRAIL

LEGEND

- WORK COMPLETED PREVIOUS PHASE
- WORK AREA
- TYPE III BARRICADE w/ TYPE "A" WARNING LIGHTS R11-2 (LANE)
- DRUMS
- DRUMS w/ W1-8(L)
- CHANNELIZING CONE
- SIGNAGE
- DIRECTION OF TRAVEL

CONTRACTOR SHALL MAINTAIN ACCESS TO ALL BUSINESSES AND DRIVEWAYS



DESIGN	X
DRAWN	CWT
CHECKED	JDH
APPROVED	JDH
SQUAD	Tt

N. CLEVELAND STREET

OKLAHOMA DEPARTMENT OF TRANSPORTATION

TCP - SEQUENCE OF CONSTRUCTION

PHASE 3 - SHEET 1

STATE JOB NO. 17020(07)

CITY PROJECT R-1311B

SHEET NO. 23
GARFIELD COUNTY

4/21/2017 6:21:56 PM - P:\2771\21\131-2771\2-1300\CAD\SHIFTEE\FILE\CLEVELA BLVD PLANS\CONSTRUCTION\SEQUENCE PH.DWG - SCHUMACHER, MIKE